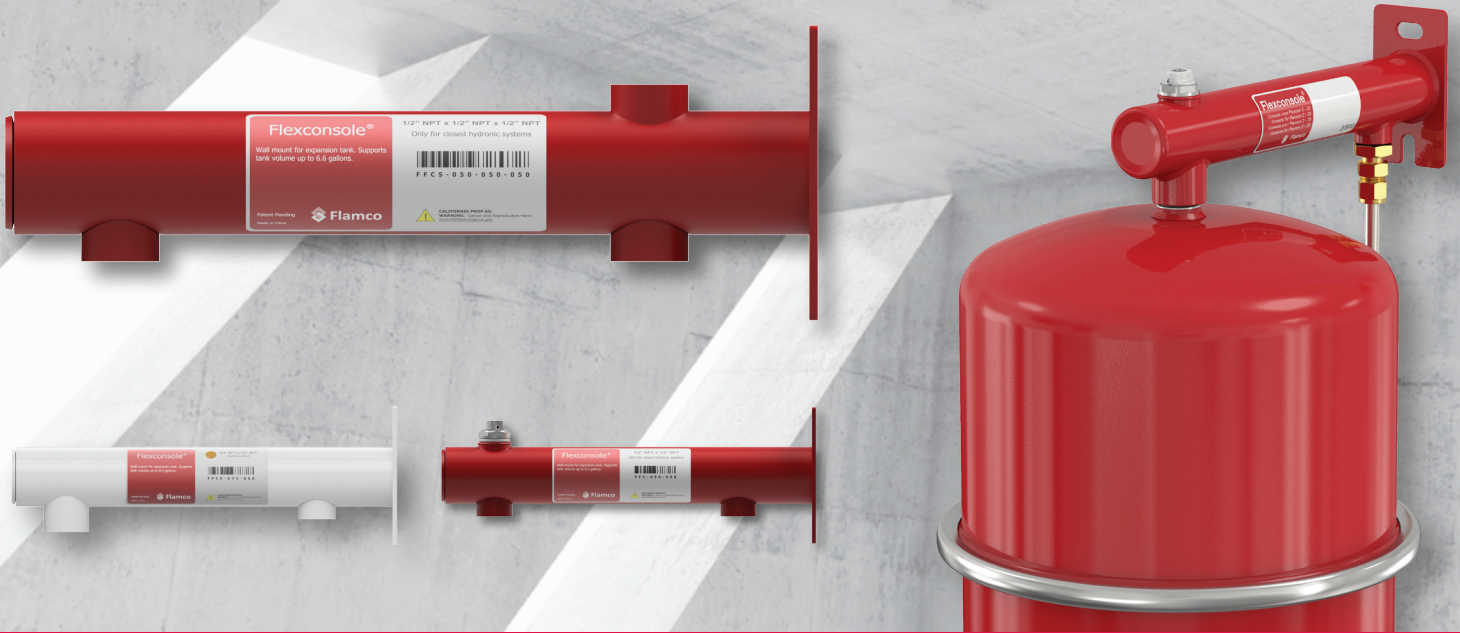




flamco

Flexconsole



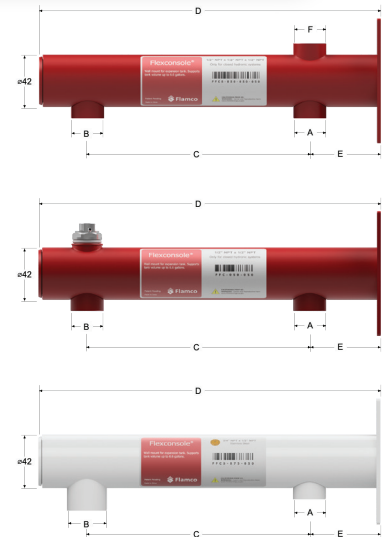
Flexconsole

The Flexconsole provides secure wall mounting for expansion tank installations. Using the Flexconsole, the expansion tank attaches to the connection part “B” for a secure vertical mounting position.

The system pipe is connected to the Flexconsole at the connection part “A”. The Flexconsole completes the expansion tank installation for your hydronic heating or domestic hot water system.

Product Features

- Provides a professional finish to expansion tank installations
- Saves time and money
- Suitable for water, max. 50% glycol
- Temperature range from 14 to 248°F
- Maximum working pressure 145 PSI
- Minimum working pressure 2.9 PSI
- In accordance with ANSI/ASME B1.20.1
- Five year warranty



Type	Connection		Dimensions (inches)			Color	Material	Order Code	Application
	A	B	C	D	E				
Flexconsole ½" x ½" x ½"	½" NPT	½" NPT	7.05	10.83	2.24	Red	Steel	F97977	Hydronic Systems
Flexconsole ½"NPT x ½"NPT	½" NPT	½" NPT	7.05	10.83	2.24	Red	Steel	F97975	Hydronic Systems
Flexconsole ¾"NPT x ½"NPT SST	½" NPT	¾" NPT	7.05	10.83	2.24	White	316 Stainless Steel	F97976	Potable Water