



The SideFlow Clean is a partial flow filter for continuous cleaning of the system for hydronic heating and cooling installations.

Connecting a SideFlow Clean to an installation ensures that a proportion (approximately 10% per cycle) of the main flow is filtered, which means dirt and magnetite are captured through a combination of a filter bag and magnetic filtration.

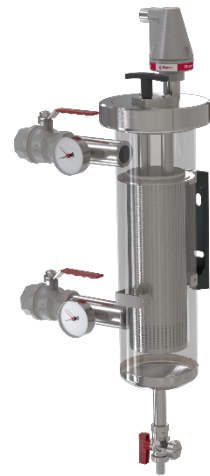
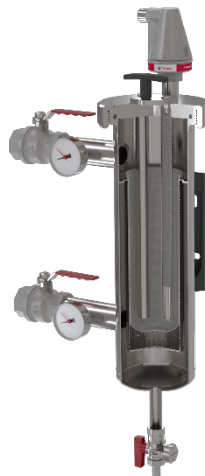
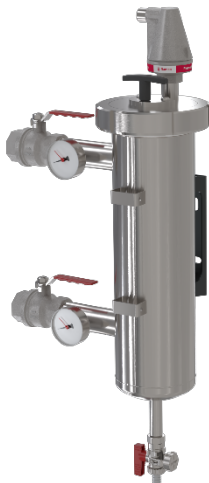
Advantages:

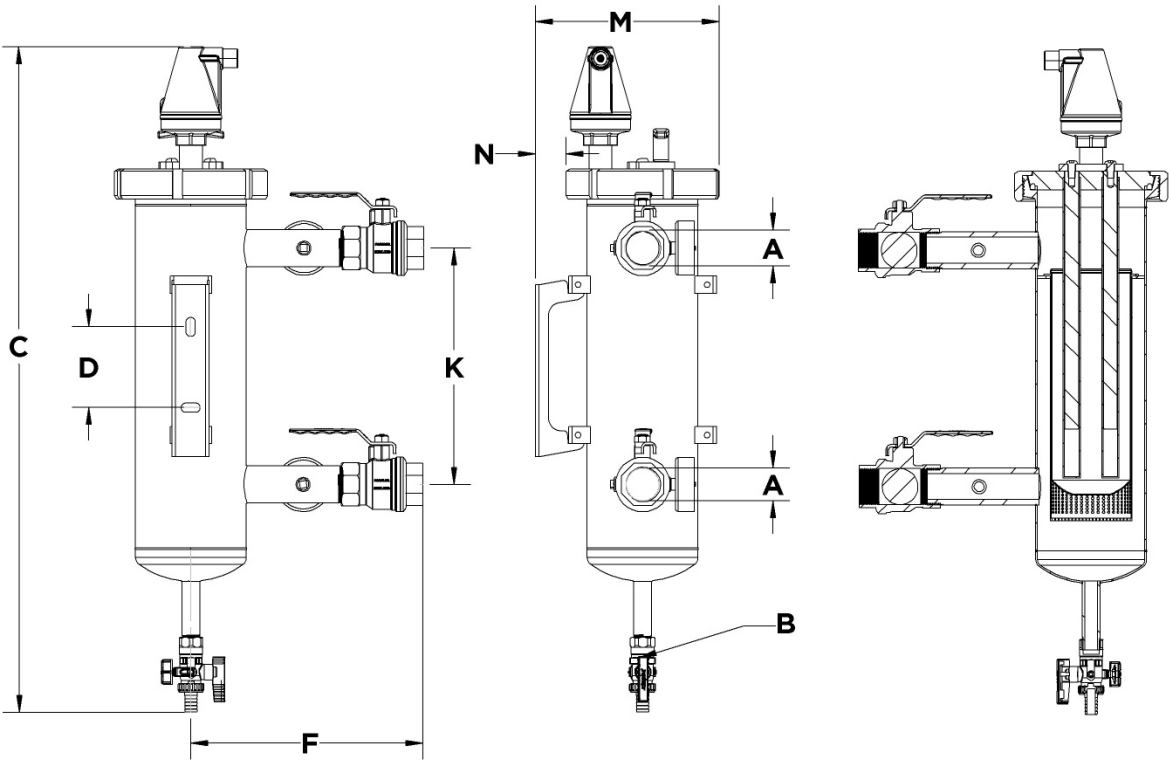
- 304 stainless steel body for corrosion resistance and durability
- Integrated insulation jacket and mounting bracket
- Quick and easy to install and maintain
- Ideal vertical markets: Data Centers and other mission-critical applications

Materials & Design Data

Body	Stainless Steel – 304	
Size	3.5 L	5 L
Fixed Magnetic Bars	1	2
Min./Max. Working Pressure	2.9 / 145 psi	2.9 / 232 psi
Max. System Size	18,500 gallons	31,700 gallons
Cv Value	19.65	77.68
Flow Through Capacity	12.7 GPM	20.6 GPM
Min./Max. Flow Velocity	0.66 / 9.84 ft/s	
Min./Max. Working Temperature	14F / 212F	
Filter Bag Material	PVC cloth with glass fiber fleece insulation. λ : 0.054 W/m	
Included Filter Bags	10, 25, 50 micron	
Insulation Thickness	1"	
Suitable for Glycol Systems	Up to 50%	

Additional Imagery





Dimensions

Part Number	Type	Capacity (Gallons)	Filter Bag Capacity (Gallons)	Connections		C (in)	D (in)	F (in)	K (in)	M (in)	N (in)	Weight (lbs)
				A	B							
	3.5 L	0.925	0.37	½" FNPT	¾" MGH	27	3.7	10.5	10.8	8.3	0.5	22
	5 L	1.32	0.63	1 ¼" FNPT	¾" MGH	29	3.7	12.25	10.8	9.4	0.4	36